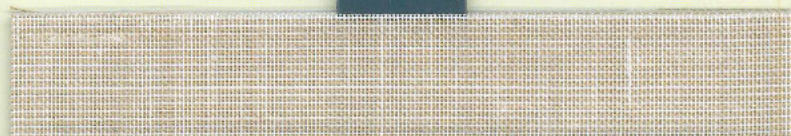




# Sinai Natural Elements



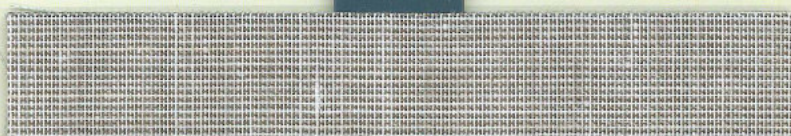
Cream 28202



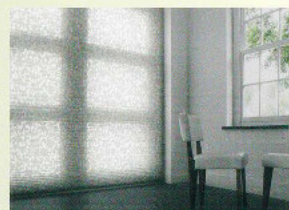
Sand 28201



Mocha 28207



Cappuccino 28208



# Teresina Natural Elements



Creamy White 49610



Blended Grey 49611



# Sinai / Teresina Natural Elements

Preisgruppe	2	2	2	2	3	3	Price group	
Transparent	x	x	x	x	x	x	Transparent	
Lichtdurchlässig							Semi-transparent	
Abdunkelnd							Dim out	
Material	95% PES + 5% Linen				60% PES 40% Viscose		Material	
Perlmutterbeschichtet							Pearl effect	
Einseitig metallisiert							Metallised	
Teflon®-Ausrüstung							Teflon® finish	
Warenbreite (mm)	2300	2300	2300	2300	2300	2300	Width (mm)	
Materialdicke (mm)	0,30	0,30	0,30	0,30	0,34	0,34	Thickness (mm)	
Gewicht (g/m²)	115	115	115	115	122	122	Weight (g/m²)	
Lichtechtheit	5-7	5-7	5-7	5-7	5-7	5-7	Colour fastness	
Schwerentflammbar							Flame retardant	
PVC- und halogenfrei							PVC- and halogen free	
Öko-Tex Standard 100	x	x	x	x	x	x	Eco-Tex Standard 100	
Feuchtraumgeeignet	x	x	x	x			Suitable for damp location	
Feucht abwischbar	x	x	x	x	x	x	Wipe with a damp cloth	
Handwäsche (30°)	x	x	x	x			Washable (30°)	
Reflexion (%)	43	41	35	29	46	39	Reflection (%)	
Absorption (%)	8	16	15	29	10	24	Absorption (%)	
Transmission (%)	49	43	50	42	44	37	Transmission (%)	
Bildschirm- arbeits- platz- eignung	N (< 20 %)						N (< 20 %)	Computer work- station suitability
	O (< 6 %)						O (< 6 %)	
	W (< 6 %)						W (< 6 %)	
	S (< 5 %)						S (< 5 %)	
Fc-Wert	3	3	3	3	3	3	Fc value	
	28202	28201	28207	28208	49610	49611		

